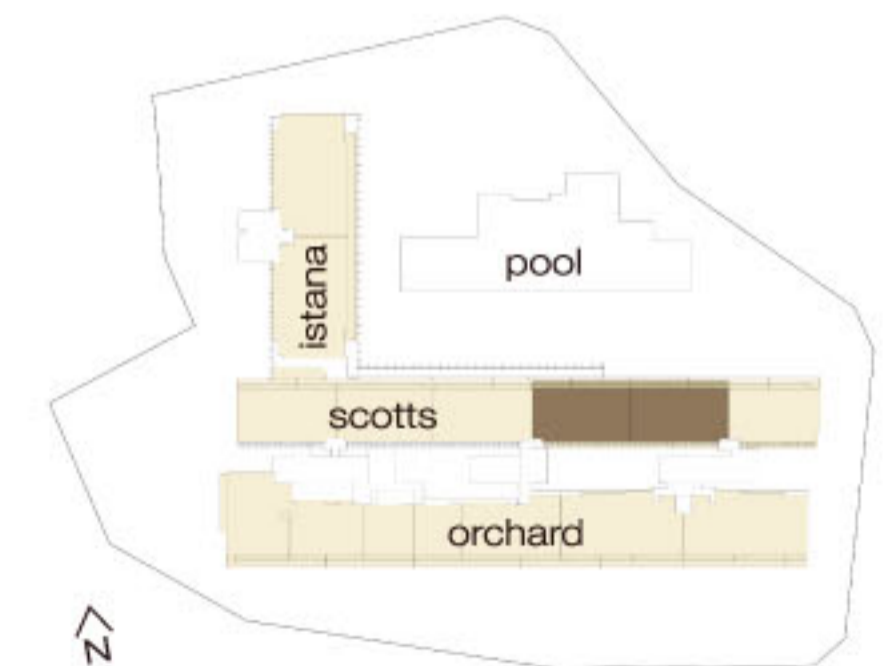


# h

## HILLTOPS

type C1  
 approx. 159 sq m  
 (1,711 sq ft)  
 units

- |         |        |        |        |          |
|---------|--------|--------|--------|----------|
| #01-14* | #07-14 | #12-14 | #17-14 | #01-10** |
| #02-14  | #08-14 | #13-14 | #18-14 | #16-10** |
| #03-14  | #09-14 | #14-14 | #19-14 | #17-10** |
| #04-14  | #10-14 | #15-14 |        | #18-10** |
| #06-14  | #11-14 | #16-14 |        | #19-10** |



\*dotted line represents PES area for #01-14 and #01-10 units—size 191 sq m (2,056 sq ft)

\*\*#10 units mirror image